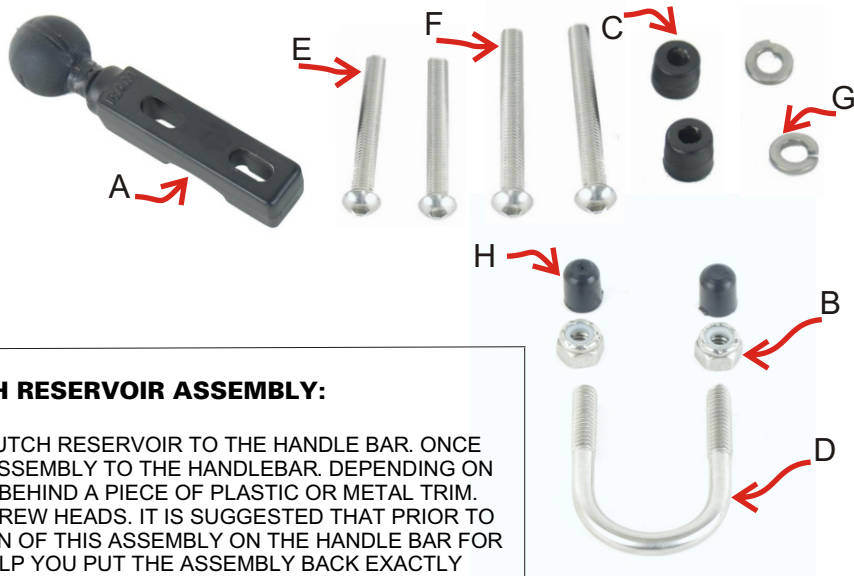


RAM-B-309-7 INSTRUCTION SHEET

Parts Index

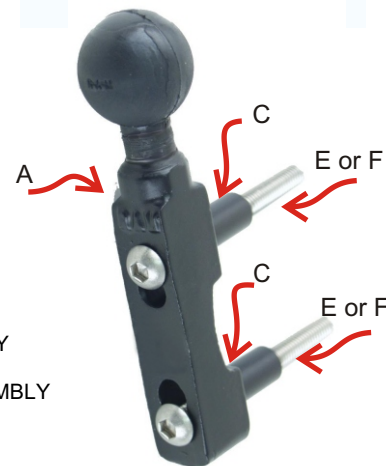
- A. MOTORCYCLE HANDLEBAR BASE
- B. 1/4"-20 NYLOCK NUT ZINC PLATED
- C. RUBBER CAP FOR 1/4" MACH SCREWS
- D. 1/4-20X 1.06 ID X 1.75 ZINC PLT U-BOLT
- E. 1/4"-20 2" BUT HD HEX DR STST MACH SCREW
- F. 6MM X 55MM BUT HD DR STST MACH SCREW
- G. 1/4" STST LOCK WASHER
- H. NYLON SPACER 1/2" OD X .257" ID X 1/2" LG



BALL BASE INSTALLATION AT BRAKE/CLUTCH RESERVOIR ASSEMBLY:

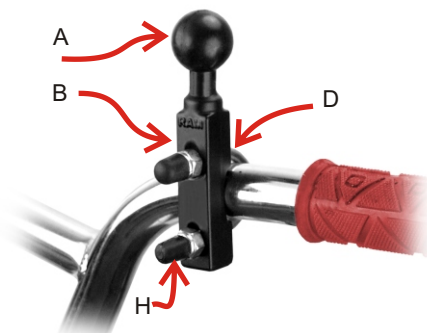
LOCATE THE ASSEMBLY THAT SECURES THE BRAKE/CLUTCH RESERVOIR TO THE HANDLE BAR. ONCE LOCATED, YOU WILL SEE TWO SCREWS HOLDING THE ASSEMBLY TO THE HANDLEBAR. DEPENDING ON YOUR MAKE AND MODEL, THESE TWO SCREWS MAY BE BEHIND A PIECE OF PLASTIC OR METAL TRIM. IF SO, REMOVE THIS PIECE OF TRIM TO EXPOSE THE SCREW HEADS. IT IS SUGGESTED THAT PRIOR TO REMOVAL OF THESE SCREWS, YOU MARK THE LOCATION OF THIS ASSEMBLY ON THE HANDLE BAR FOR HORIZONTAL AND VERTICAL PLACEMENT. THIS WILL HELP YOU PUT THE ASSEMBLY BACK EXACTLY WHERE IT SHOULD IT BE MOVED ACCIDENTALLY.

1. USING AN ALLEN WRENCH, LOOSEN AND REMOVE ONE OF THE SCREWS AND COMPARE THE THREAD TO THAT OF THE SCREWS PROVIDED. ONCE YOU HAVE A MATCH, GATHER THE TWO PROPER SCREWS, BLACK ROUND STAND-OFFS, AND LOCK WASHERS.
2. TAKE EACH SCREW AND PASS IT THROUGH A LOCK WASHER. NOW, SO THAT THE NOTCH WILL BE FACING THE HANDLEBAR, PLACE EACH SCREW WITH WASHER THROUGH THE HOLES IN THE BALL BASE. THE SCREW HEADS SHOULD BE ON THE SAME SIDE AS THE RAM LOGO.
3. WITH THE SCREWS THROUGH THE BALL BASE, PUT A STAND-OFF OVER THE THREAD OF EACH SCREW AND SLIDE IT DOWN UNTIL IT TOUCHES THE BALL BASE. SET THIS ASSEMBLY ASIDE WITHIN EASY REACH.
4. REMOVE THE FINAL SCREW THAT IS HOLDING THE BRAKE/CLUTCH ASSEMBLY TO THE HANDLEBAR. IF NEEDED, HOLD THE ASSEMBLY TOGETHER WITH ONE HAND TO KEEP IT FROM FALLING AS YOU REMOVE THE SCREW.
5. ONCE THE CLAMP IS REMOVED ALONG WITH THE FACTORY SCREWS, SET THEM ASIDE.
6. CAREFULLY PICK UP THE RAM HANDLEBAR ASSEMBLY.
7. ALIGN THE SCREWS WITH THE THREADED HOLES OF THE BRAKE/CLUTCH RESERVOIR ASSEMBLY AND START THE SCREWS BY HAND.
8. USING AN ALLEN WRENCH, TIGHTEN THE SCREWS UNTIL THE BRAKE/CLUTCH RESERVOIR ASSEMBLY IS ONCE AGAIN SECURE.
9. STORE FACTORY CLAMP AND HARDWARE FOR LATER REPLACEMENT IF DESIRED.



BALL BASE INSTALLATION WITH U-BOLT:

1. CHOOSE A LOCATION ON THE HANDLE BAR THAT DOES NOT INTERFERE WITH FACTORY EQUIPMENT OR BLOCK GAUGES. SAFETY FIRST.
2. PLACE THE U-BOLT AROUND THE HANDLEBAR AND ALIGN THREADS WITH THE TWO HOLES OF THE BALL BASE.
3. WITH THE NOTCH IN THE BASE FACING THE HANDLEBAR, SLIDE THE BASE OVER THE THREADS.
4. USING THE TWO 1/4-20 NUTS PROVIDED, THREAD EACH ONE BY HAND UNTIL THEY STOP.
5. USING A SOCKET OR BOX END WRENCH, ALTERNATE TIGHTENING EACH NUT UNTIL BALL BASE IS JUST SNUG AGAINST THE HANDLE BAR.
6. PRIOR TO FINAL TIGHTENING OF THE NUTS, MAKE SURE PLACEMENT OF BALL BASE IS SATISFACTORY.
7. DO NOT OVER TIGHTEN NUTS. TIGHTENING OF THE NUTS BEYOND 5 FOOT POUNDS OF TORQUE MAY RESULT IN CRACKING THE BASE. OVER TIGHTENING CAN ALSO DAMAGE THE HANDLE BAR SO TAKE CARE WHEN TIGHTENING THESE NUTS.
8. LASTLY, PLACE THE TWO BLACK RUBBER CAPS OVER THE EXPOSED THREAD OF THE U-BOLT.



DAMAGE DUE TO MODIFICATIONS, IMPROPER INSTALLATION, ROAD HAZARDS OR ACCIDENT, ARE NOT COVERED. RAM SHALL NOT BE LIABLE FOR ANY INJURY, LOSS, OR DAMAGE, DIRECT OR CONSEQUENTIAL, ARISING OUT OF IMPROPER INSTALLATION, OR INABILITY TO USE PRODUCT. BEFORE USING, USER SHALL DETERMINE THE SUITABILITY OF THE PRODUCT FOR ITS INTENDED USE, AND USER ASSUMES ALL RISK AND LIABILITY, WHATSOEVER, IN CONNECTION THEREWITH.

